

Toxic Threat Zone

Time: July 21, 2022 1921 hours ST (user specified)

Chemical Name: OZONE

Wind: 2.21 meters/second from WSW at 3 meters

THREAT ZONE:

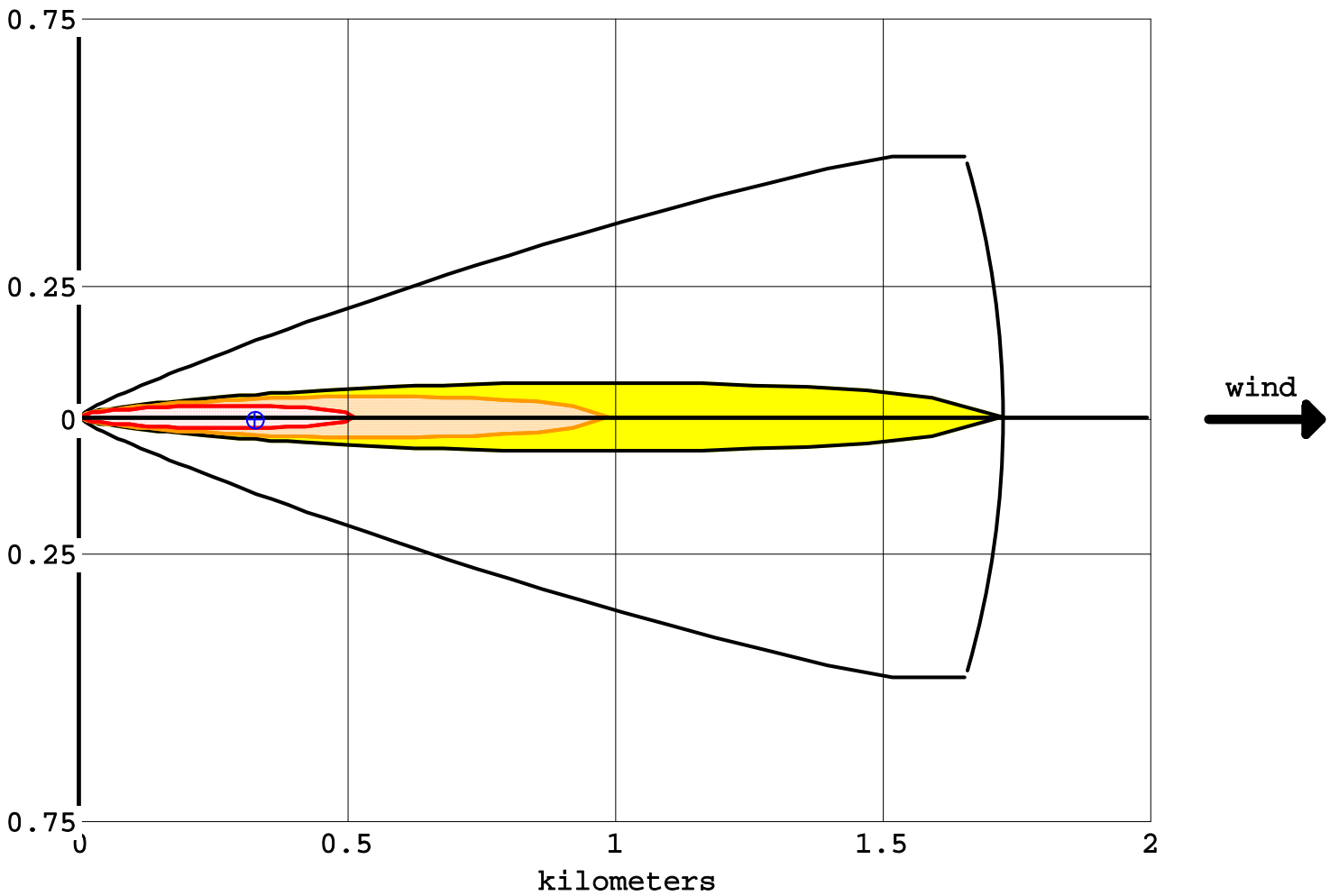
Model Run: Heavy Gas

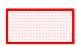



Red : 511 meters --- (5 ppm = IDLH)

Orange: 988 meters --- (1 ppm = PAC-2)

Yellow: 1.7 kilometers --- (0.24 ppm = PAC-1)

kilometers



-  greater than 5 ppm (IDLH)
-  greater than 1 ppm (PAC-2)
-  greater than 0.24 ppm (PAC-1)
-  wind direction confidence lines

Concentration at Point

Time: July 21, 2022 1921 hours ST (user specified)

Chemical Name: OZONE

Building Air Exchanges Per Hour: 0.47 (unsheltered single storied)

THREAT AT POINT:

Model Run: Heavy Gas

Concentration Estimates at the point:

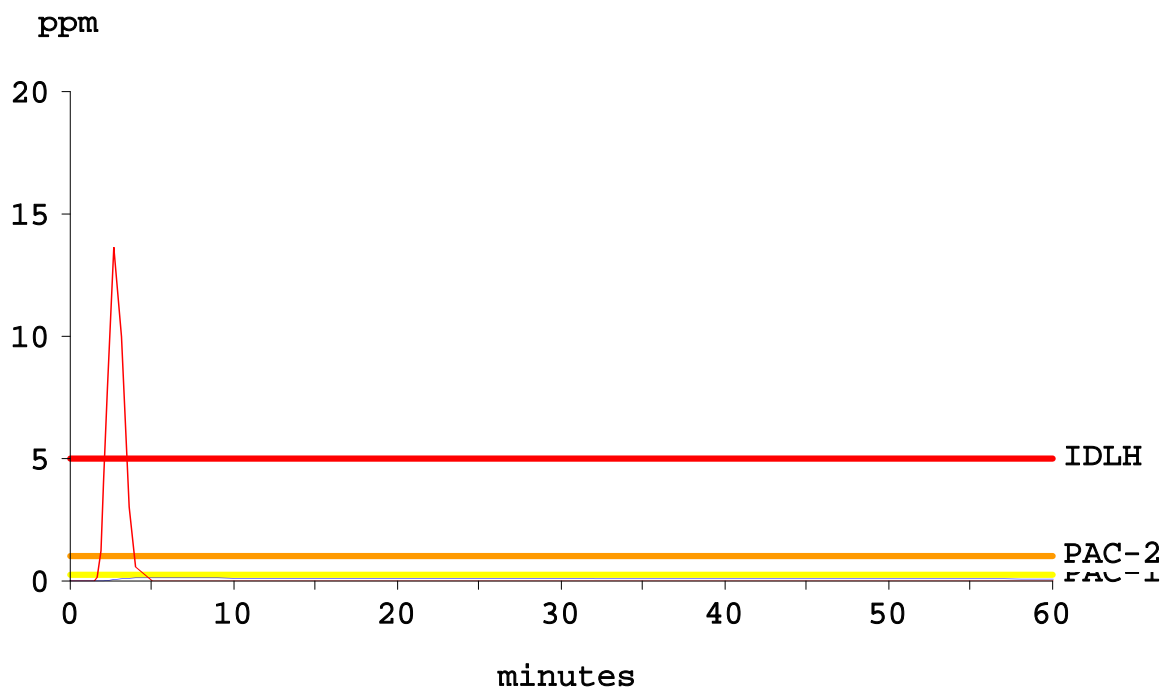
Downwind: 324 meters

Off Centerline: 0 meters

Max Concentration:

Outdoor: 13.6 ppm

Indoor: 0.12 ppm



— Outdoor Concentration

— Indoor Concentration

At Point: Downwind: 324 meters Off Centerline: 0 meters

**SITE DATA:**

Location: TLAJOMULCO DE ZUÑIGA, MEXICO
Building Air Exchanges Per Hour: 0.47 (unsheltered single storied)
Time: July 21, 2022 1921 hours ST (user specified)

CHEMICAL DATA:

Chemical Name: OZONE
CAS Number: 10028-15-6 Molecular Weight: 48.00 g/mol
PAC-1: 0.24 ppm PAC-2: 1 ppm PAC-3: 10 ppm
IDLH: 5 ppm
Ambient Boiling Point: -114.2° C
Vapor Pressure at Ambient Temperature: greater than 1 atm
Ambient Saturation Concentration: 1,000,000 ppm or 100.0%

ATMOSPHERIC DATA: (MANUAL INPUT OF DATA)

Wind: 2.21 meters/second from WSW at 3 meters
Ground Roughness: open country Cloud Cover: 5 tenths
Air Temperature: 21° C Stability Class: E
No Inversion Height Relative Humidity: 50%

SOURCE STRENGTH:

Non-flammable gas is escaping from pipe
Pipe Diameter: 4 inches Pipe Length: 113 meters
Unbroken end of the pipe is closed off
Pipe Roughness: smooth Hole Area: 12.6 sq in
Pipe Press: 1.7 atmospheres Pipe Temperature: 21° C
Release Duration: 1 minute
Max Average Sustained Release Rate: 26.5 grams/sec
(averaged over a minute or more)
Total Amount Released: 1.59 kilograms

THREAT ZONE:

Model Run: Heavy Gas
Red : 511 meters --- (5 ppm = IDLH)
Orange: 988 meters --- (1 ppm = PAC-2)
Yellow: 1.7 kilometers --- (0.24 ppm = PAC-1)

THREAT AT POINT:

Concentration Estimates at the point:
Downwind: 324 meters Off Centerline: 0 meters
Max Concentration:
Outdoor: 13.6 ppm
Indoor: 0.12 ppm